



**LUMIX PROCUT**  
Food Processing Solutions

**AFI** FOOD  
TECHNOLOGY

# SEPARATION ON A NEW LEVEL

**ALLMAXX S**



**SEPARATION MACHINE**

**FLEXIBLE  
EFFICIENT  
SIMPLE**

  
MADE IN GERMANY



## WHY ALLMAXX S?

- ❁ Wide application range: meat, fish, poultry, fruit, pet food, etc.
- ❁ Gentle and efficient separation — high yield with excellent product quality
- ❁ Hygienic machine design — easy to clean
- ❁ Compact construction — ideal for any plant size
- ❁ Intuitive operating concept
- ❁ Integrated pressure technology for consistent results and reduced wear
- ❁ Durable components — minimal maintenance required



## MORE FLEXIBILITY. MORE YIELD. LESS EFFORT.

The **Allmaxx S** was developed to efficiently process a wide variety of products — from meat and poultry to fish, fruit, and pet food.

With its compact, hygienic design and intelligent control, the **Allmaxx S** is the perfect solution for small, medium, and large processing plants.

# FLEXXPRESS TECHNOLOGY

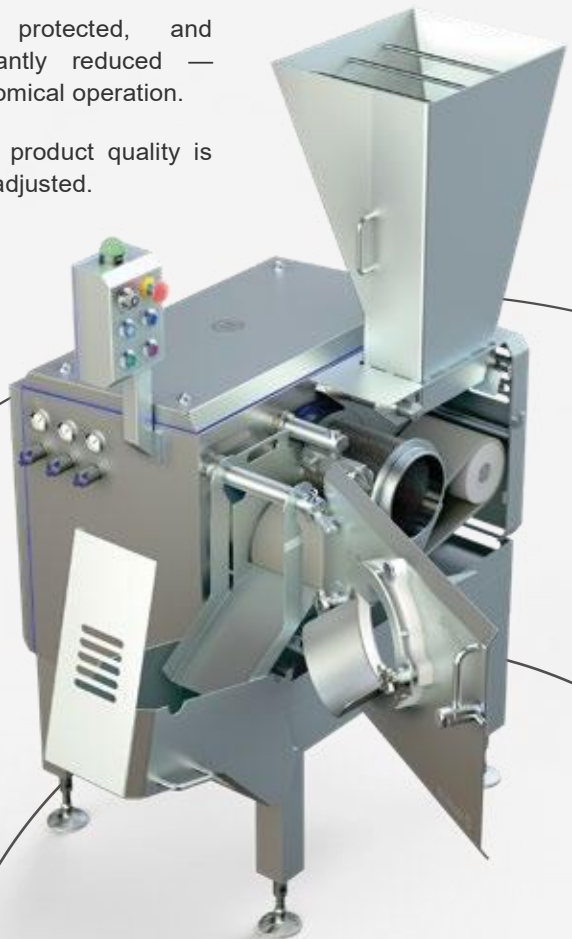
Consistent performance with innovative pressure control

The **Allmaxx S** is equipped with an integrated pressure technology that ensures uniform separation results even when product properties vary.

Powered by compressed air (pneumatic), the system delivers consistent product quality.

Sensitive components are protected, and maintenance effort is significantly reduced — ensuring safe, efficient, and economical operation.

The balance between yield and product quality is excellent and can be individually adjusted.



## STANDARD FEATURES



Stepless speed control

Fill level sensor for process optimization — reduces wear



Tool-free pressure adjustment during operation

Hygienic, open machine design



Perforated drum with optimized geometry — extended lifetime (up to 80%)

Pneumatic belt scraper and tensioning



## OPTIONS

- ⚙ Manual, hopper-based, or automatic feeding
- ⚙ Touchscreen display with intuitive operation and pressure control
- ⚙ Automatic lubrication pump (cartridge for up to 1 year)
- ⚙ Pusher for large-volume products
- ⚙ TecBelt: 10 – 13 mm (functional belt)
- ⚙ Perforated drum sizes: 1 – 8 mm
- ⚙ (Optional): parts trolley for cleaning removable parts

## TECHNICAL DATA

- ⊛ Drive motor: 3 kW
- ⊛ Capacity: 500 kg/h to 5 t/h (depending on product)
- ⊛ Pressure system: pneumatic with automatic adjustment
- ⊛ FlexxPress technology with pneumatic scraper and belt tensioning TecBelt: 10 - 13 mm
- ⊛ Perforated drum sizes: 1 / 1,3 / 2 / 3 / 5 / 8 mm
- ⊛ Control: speed, pressure, feeding (optional)

